

Downloading, Installing and Registering TWI's Welding Software: Weldspec, Welderqual, NDTspec and Welding Coordinator

Please note you will need to be logged in as an Administrator on your PC to install this software.

1 Contents

1	Contents	1
2	Versions.....	1
3	Registering on the software website	1
4	Logging in to the software website.....	1
5	Downloading the latest software	2
6	Installing the software.....	2
7	Registering the Software	2
8	Setting up for Sharing Your Data on a Network.....	3
9	Setting up the Software	4

2 Versions

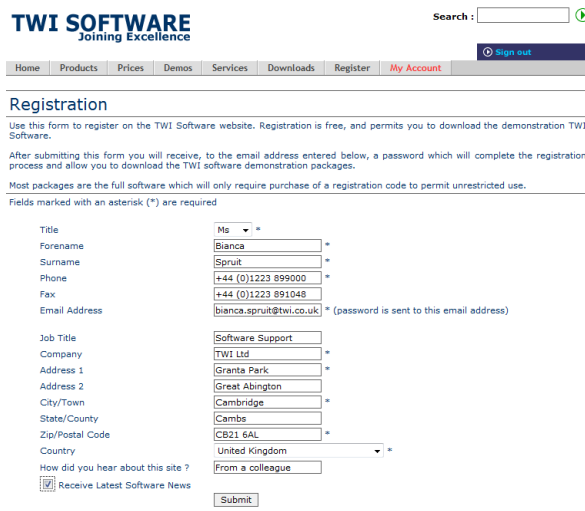
This document covers the following versions of the welding software:

- Weldspec 4.9.7762
- Welderqual 4.10.7774
- NDTSpec 4.4.7476
- Welding Coordinator 4.01.5664

3 Registering on the Software Website

If you have already done so, proceed to step 4.

- Open the TWI software website www.twisoftware.com and click on the **Register** button.
- Complete the registration information and click on the **Submit** button. The login details required to access the software downloads will be sent to the email address you supply on this form.



The screenshot shows the TWI Software website registration page. At the top, there is a search bar and a navigation menu with links for Home, Products, Prices, Demos, Services, Downloads, Register, and My Account. The main heading is "Registration". Below this, there is a "Sign out" button. The registration form includes the following fields:

- Title: Ms
- Forename: Bianca
- Surname: Spruit
- Phone: +44 (0)1223 899000
- Fax: +44 (0)1223 891048
- Email Address: bianca.spruit@twi.co.uk
- Job Title: Software Support
- Company: TWI Ltd
- Address 1: Grante Park
- Address 2: Great Abington
- City/Town: Cambridge
- State/County: Cambs
- Zip/Postal Code: CB21 6AL
- Country: United Kingdom
- How did you hear about this site?: From a colleague

There is a checkbox for "Receive Latest Software News" and a "Submit" button at the bottom of the form.

4 Logging in to the Software Website

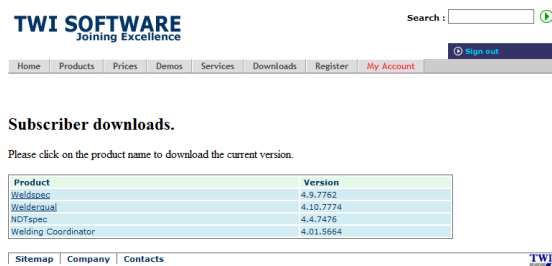
- Now type www.twisoftware.com into your internet browser address bar and hold your mouse over the **Downloads** button to view the drop down menu. Click on the name of the program you wish to install.
- Enter the Username and Password supplied in your email and click **Sign in**. The password is case sensitive.

If you have problems logging in, it is usually due to one of the following:


- A misspelling of the User Name or Password. **Remember** your username is the email address you entered onto the registration form.
- Using the wrong case for the letters in the password.
- A space at the beginning or end of the password.

If you still have problems after checking these, please contact support@twisoftware.com

If the user ID and password are correct, the website displays a list of the latest versions:



TWI SOFTWARE
Joining Excellence


Search: 

Home Products Prices Demos Services Downloads Register My Account [Sign out](#)

Subscriber downloads.

Please click on the product name to download the current version.

Product	Version
Weldspec	4.9.7762
Welderqual	4.10.7774
NDTspec	4.4.7476
Welding Coordinator	4.01.5664

Sitemap | Company | Contacts 

5 Downloading the Latest Software

- Click on the name of the required software from the list.
- The system then displays options to **Run** or **Save** the installation program. **Save** is a quicker option if you will be installing the system on several computers as you will only need to download the file once. You will be prompted to enter a location to save the installation program to. **Don't forget the location.** It is advised you do **not** save to desktop as the installation file icon could be confused with the actual program icon after installation. Once the file has downloaded, select to **Run** it, or navigate to where the file was saved and double-click on the file name or icon.
- On selecting **Run** your pc may display a security warning. Select **Yes, Run** and/or **Allow** to proceed.

6 Installing the Software

- Click **Next** on the first screen and **Yes** to agree to the Licence Agreement.
- Next is Destination Location. You can accept the default folder or choose your own folder location to save the program to. If in doubt, choose the default folder. Don't forget the location. If in doubt, choose the default folder. Click **Next**, and **Next** again.
- (For NDTSpec installation this screen does not appear) Now select the default code/standard – this one will be the first on display when using the software. Note that the other codes/standards will always be only one click away. Click on **Next**.
- Select the default unit scheme and click **Next**.
- Select your preferred language, click **Next** and **Next** again and finally, **Finish**.

All of the defaults can be changed at any time by selecting **Tools, Options, Default settings** in your welding software.

- If you are installing Welding Coordinator you should have been emailed a License file. Save this into C:\Program files\TWI-C-Spec\Weldcoor32 and installation is complete. Go to step 7 if you wish to network the software.

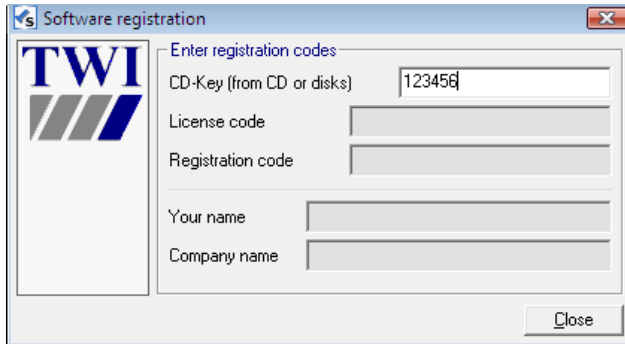
7 Registering the Software

If running Windows Vista or 7, Weldspec must be run as an administrator. Right-click on the Weldspec icon and select **Run as administrator**.

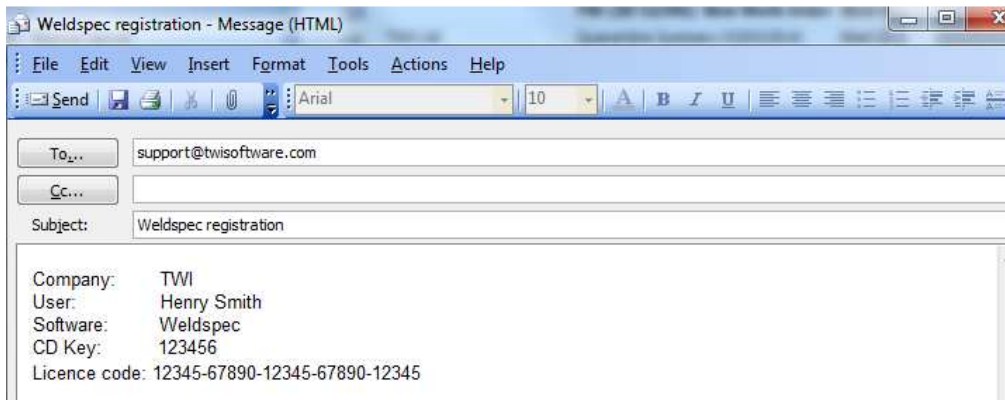
There will now be a program icon on your desktop and a program group **TWI Software** in the **Start** menu. When you open the program from one of these locations it will open in demonstration mode. This restricts the number of documents that can be created and displays demonstration text across the screen and any printouts.

Once the software has been paid for, to activate full working mode, the software should be registered as follows:

- Click on the **Close** button on the Welcome screen.
- Click on Help, Register Software...
- You should have been sent an email with the **CD Key** when you purchased the software. Type the **CD key** into the box provided, then press the **Enter** key on your keyboard. If you have purchased the software and you do not have a CD key, contact support@twisoftware.com.



- The software generates a **Licence code** which should be emailed to support@twisoftware.com with the **name** of the user, the **CD key** used, the **company name** and the **name of the program** to be registered. The easiest way to do this is to copy and paste the codes into an email:



- We will email you a **Registration code**. Copy and Paste this into the box provided and press the **Enter** key. The software confirms it has been changed to full operation. If you have any problems activating the software, check that the codes you emailed to and received from TWI support match the codes you are using.
- Enter the User name and Company name into the boxes provided, click **Close**, then select **File, Exit**. When you reopen the software it will be in full working mode.

8 Setting up for Sharing Your Data on a Network

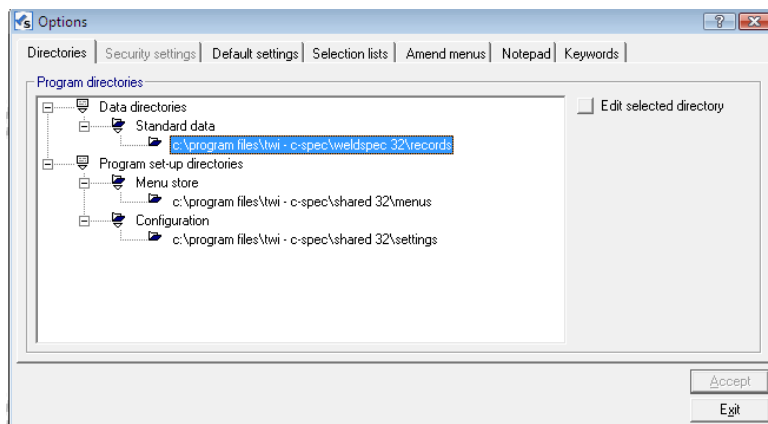
- To use the same program with the same menus and settings on different pcs over a local area network, you should initially complete the installation steps as above.
- Now move the folders containing the data you wish to share to a shared network drive or server directory to which all users should have full read and write access from their PCs. The folders to be shared are in the following locations (assuming the default folder locations were chosen during install):

Standard data: c:\program files\TWI-C-spec\XXX 32\Records (where XXX is Weldqual, NDTspec, weldcoor (Welding coordinator), or Weldspec).

Menu Store: c:\program files\TWI-C-spec\Shared 32\Menus

Configuration: c:\program files\TWI-C-spec\Shared 32\Settings

- Enter the software (once you have registered it) and click on **Tools, Options**. On the directories tab you can click on the **Standard data** file path eg c:\program files\TWI-C-spec\weldspec 32\records and click on the **Edit selected directory** button. Now select the path to the folders you have copied onto your shared directory. Complete this for the Menu store and configuration files in the same way.



- Click **Accept**, before clicking **Exit** or another Options tab, otherwise your changes will be lost.

9 Setting up the Software

There are a number of features in the software which can be set-up. These are all described in the software's Help system or the Tutorial system (both found within **Help, Contents**). They include:

- Setting up users and passwords so that the software can automatically keep track of who has created, modified and signed documents.
- Setting up the header of the document including your company name and logo.
- Setting up document signature blocks.

If you have any problems with any of the above, see the program's **Help** system or contact software support on support@twisoftware.com or +44 (0)1223 899000.