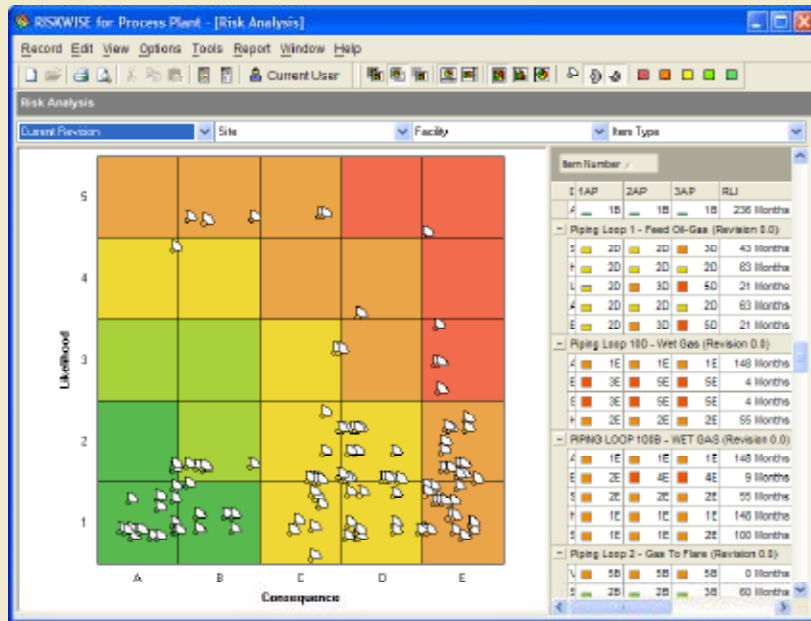


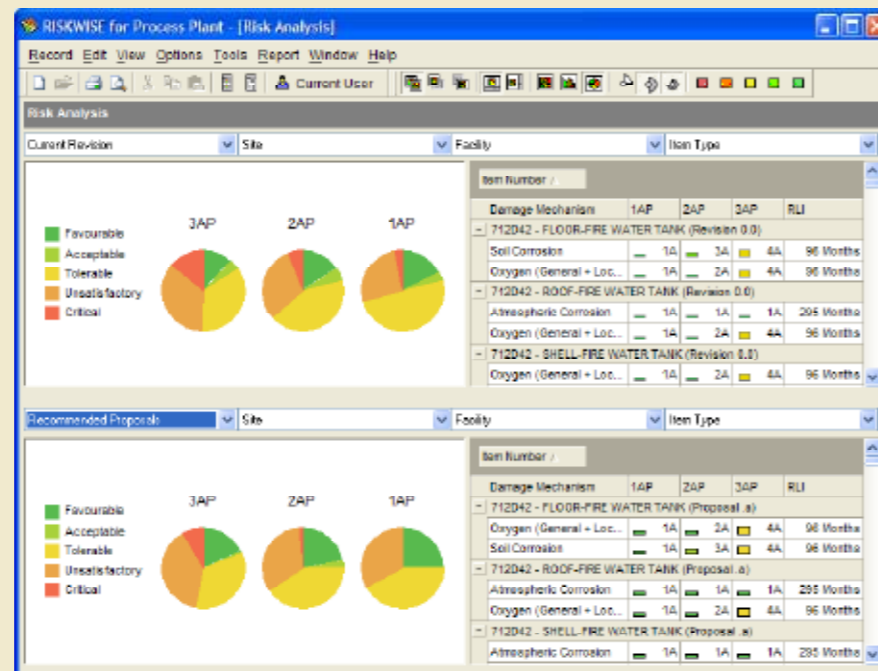
## RISKWISE™ - Some key features



Risk profile of all equipment within the facility is summarised on a risk plot

- semi-automatic **inspection planning** to evaluate the current level of inspection
- a consequence model based on the API BRD 581 and NFPA library for **all fluids and gases** encountered in the production, refining, petrochemical and chemicals industries
- discrete risk values calculated for **each damage mechanism** in each item of equipment
- fully quantitative financial cost-risk calculation optimisation available via **LIFEWISE™**

- **fitness-for-service** assessment using TWI's ENGFIT™ Toolbox
- **data transfer and import utility** from other inspection and maintenance databases or spreadsheets, to speed up data and information entry and to minimise errors
- expert damage modules from **API RP 571 provided under licence** from the American Petroleum Institute



Impact of mitigation actions on the risk distribution and RLIs

# RISKWISE™

Advanced code-compliant Risk-based Inspection (RBI) software for optimising plant inspection



For further information, please contact:

Dr Brian Cane

E-mail: [riskwise@twi.co.uk](mailto:riskwise@twi.co.uk)

Tel: +44 (0) 1223 899000

Fax: +44 (0) 1223 892588

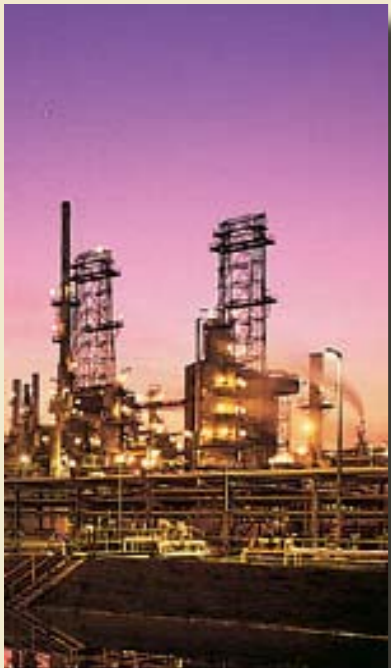
Website: [www.twisoft.com/riskwise](http://www.twisoft.com/riskwise)

TWI Ltd, Granta Park, Great Abington,  
Cambridge CB1 6AL, UK



# OIL AND GAS

# RISKWISE™ FOR OIL AND GAS



Implementation at Valero Energy Refinery, USA



Engineers from Huntsman Polymers in Odessa, Texas undergoing an interactive training course in the use of RISKWISE™

## RISKWISE for Process Plant™

For the assessment of upstream and downstream, onshore and offshore process pressure equipment such as vessels, columns, fired heaters, piping, pumps, exchangers, tanks and relief valves

## RISKWISE for Storage Tanks™

Specifically tailored risk models for the assessment of tank farms. In addition to the tank themselves, RISKWISE for Storage Tanks™ also accommodates the assessment of associated process equipment and piping

## RISKWISE for Pipelines™

Customised risk models allow for the assessment of transportation pipelines both onshore and offshore

## RISKWISE for Boilers™

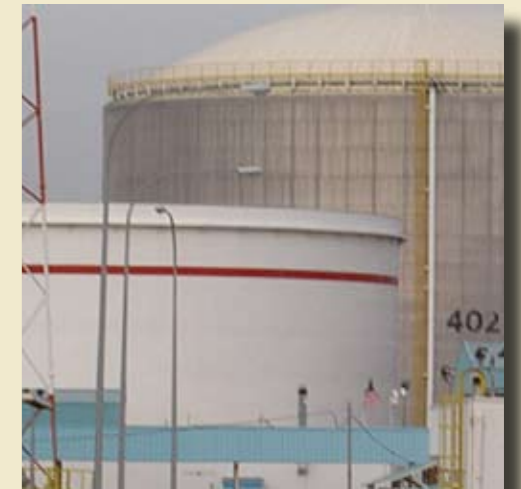
Covers all pressure parts within the boiler (tubes, headers, drums etc.), ducting and steam pipework



## FEATURES AND BENEFITS AT A GLANCE

- ASME/API-compliant software for optimising inspection and maintenance intervals based on API RP 580 and BRD 581
- Allows operators to establish inspection plans as an alternative to the traditional requirements in, for example, API 510
- Based on generally accepted risk engineering principles for oil and gas production, petroleum refining and chemical plant
- High level of ongoing technology development by subjecting the software to the scrutiny of a worldwide group of end-users
- Evaluates the distribution of the risk of failure for all types of process equipment (pressure vessels, piping, rotating equipment, valves etc.)
- Provides estimates of remaining life for all API RP 571 in-service damage mechanisms (corrosion, mechanical, metallurgical, high temperature etc.)
- Designed for use by plant personnel so that implementation and maintenance are not dependent on the use of external RBI consultants
- TWI provides training, support and practical advice for its software tools, from leading authors of the world's best practice RBI guides

**RISKWISE™ offers the next generation in plant integrity management systems, by allowing engineers and managers to improve targeting and scheduling of inspection and maintenance, thus improving safety and plant availability and reducing outage and maintenance costs**



RISKWISE for Tanks™ applied in Malaysia



QatarGas LNG plant uses RISKWISE™

[www.twisoftware.com/riskwise](http://www.twisoftware.com/riskwise)