

# Downloading, Installing and Registering TWI's Welding Software: Weldspec, Welderqual, NDTspec and Welding Coordinator 4.0

Please note you will need to be logged in as an Administrator on your PC to install this software.

## Contents

1	Versions .....	1
2	Registering on the Software Website.....	1
3	Logging in to the Software Website .....	1
4	Downloading the Latest Software .....	3
5	Installing the Software.....	3
6	Registering the Software .....	3
7	Setting up for Sharing Your Data on a Network.....	4
8	Setting up the Software .....	5

## 1 Versions

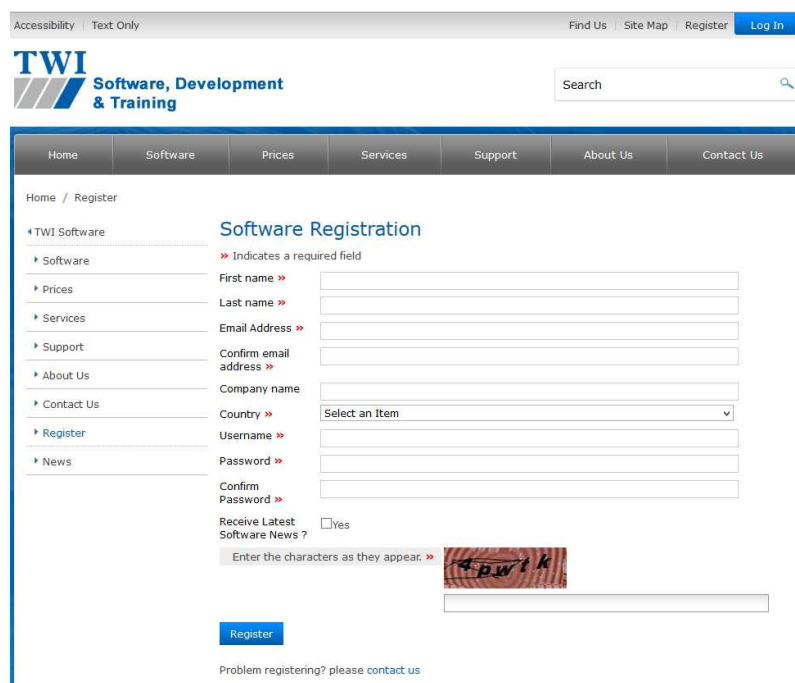
This document covers the installation of the following versions:

- Weldspec: 4.14.xxxxx
- Welderqual: 4.15.xxxxx
- NDTspec: 4.04.xxxxx
- Welding Coordinator: 4.01.xxxx

## 2 Registering on the Software Website

If you have already done so, proceed to step 4.

- Open the TWI software website [www.twisoftware.com](http://www.twisoftware.com) and click on the **Register** button.
- Complete the registration information and click on the **Submit** button. The login details required to access the software downloads will be sent to the email address you supply on this form.



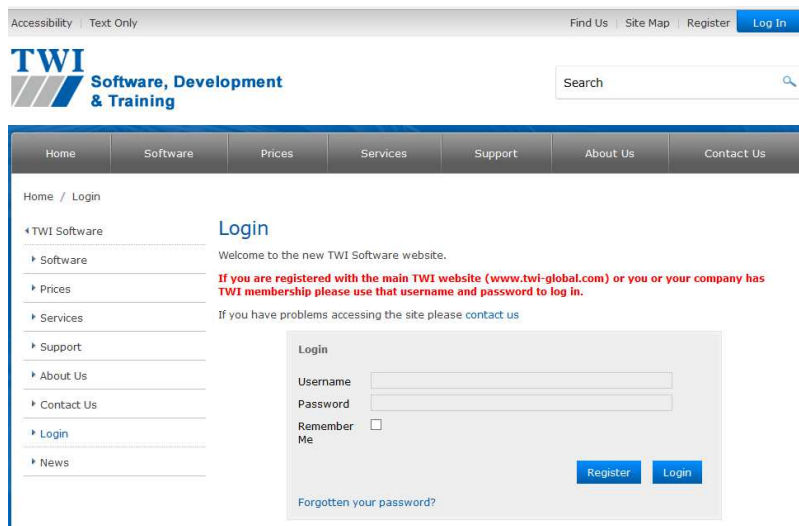
The screenshot shows the TWI Software Registration page. At the top, there are links for Accessibility, Text Only, Find Us, Site Map, Register, and Log In. The TWI logo and tagline 'Software, Development & Training' are on the left, with a search bar on the right. A navigation menu includes Home, Software, Prices, Services, Support, About Us, and Contact Us. The main content area is titled 'Software Registration' and contains a form with the following fields: First name, Last name, Email Address, Confirm email address, Company name, Country (dropdown), Username, Password, and Confirm Password. There is a checkbox for 'Receive Latest Software News?' and a CAPTCHA image with the text '4pw1k'. A 'Register' button is at the bottom of the form, and a link for 'Problem registering? please contact us' is below it.

- If you have purchased TWI welding software and need access to the latest versions of the software, email [support@twisoftware.com](mailto:support@twisoftware.com) requesting your access rights to the software be upgraded. You will receive confirmation from one of the support team.

## 3 Logging in to the Software Website

- Now type [www.twisoftware.com](http://www.twisoftware.com) into your internet browser address bar. Once the website has loaded, click on **Sign in**

- Enter the Username and Password supplied in your email and click **Login**. The password is case sensitive.



Accessibility | Text Only Find Us | Site Map | Register | [Log In](#)

**TWI** Software, Development & Training

Search

Home | Software | Prices | Services | Support | About Us | Contact Us

Home / Login

← TWI Software

- Software
- Prices
- Services
- Support
- About Us
- Contact Us
- **Login**
- News

### Login

Welcome to the new TWI Software website.

**If you are registered with the main TWI website ([www.twi-global.com](http://www.twi-global.com)) or you or your company has TWI membership please use that username and password to log in.**

If you have problems accessing the site please [contact us](#)

**Login**

Username

Password

Remember Me

[Register](#) [Login](#)

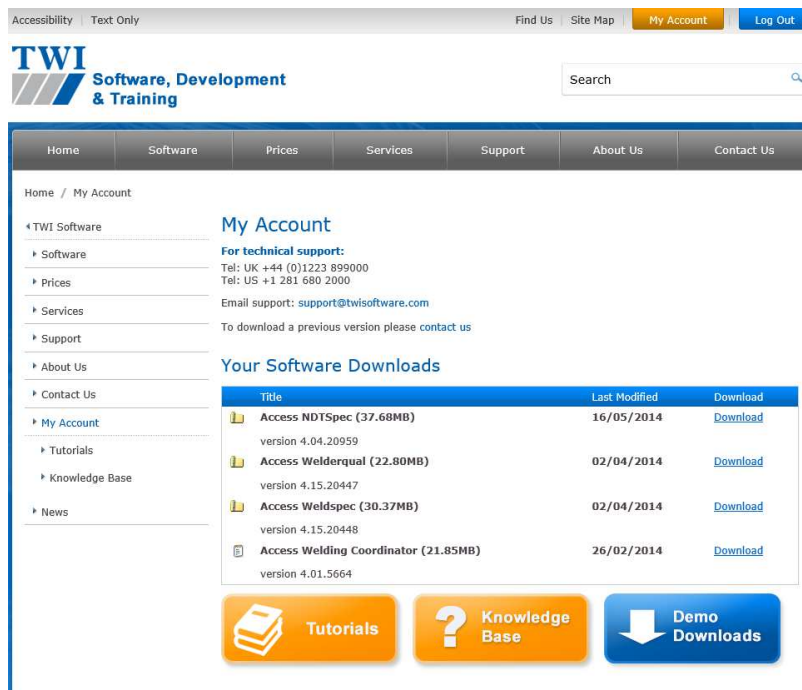
[Forgotten your password?](#)

If you have problems logging in, it is usually due to one of the following:

- A misspelling of the User Name or Password. **Remember** your username is the username you entered onto the registration form.
- Using the wrong case for the letters in the password.
- A space at the beginning or end of the password.

If you still have problems after checking these, please contact [support@twisoftware.com](mailto:support@twisoftware.com)

- Click on **My Account**.



Accessibility | Text Only Find Us | Site Map | [My Account](#) | [Log Out](#)

**TWI** Software, Development & Training

Search

Home | Software | Prices | Services | Support | About Us | Contact Us

Home / My Account

← TWI Software

- Software
- Prices
- Services
- Support
- About Us
- Contact Us
- **My Account**
- Tutorials
- Knowledge Base
- News

### My Account

**For technical support:**  
 Tel: UK +44 (0)1223 899000  
 Tel: US +1 281 680 2000  
 Email support: [support@twisoftware.com](mailto:support@twisoftware.com)

To download a previous version please [contact us](#)

#### Your Software Downloads

Title	Last Modified	Download
Access NDTSpec (37.68MB) version 4.04.20959	16/05/2014	<a href="#">Download</a>
Access Welderqual (22.80MB) version 4.15.20447	02/04/2014	<a href="#">Download</a>
Access Weldspec (30.37MB) version 4.15.20448	02/04/2014	<a href="#">Download</a>
Access Welding Coordinator (21.85MB) version 4.01.5664	26/02/2014	<a href="#">Download</a>

[Tutorials](#) [Knowledge Base](#) [Demo Downloads](#)

- **Your Software downloads** page will be displayed. If you do not see this page please contact [support@twisoftware.com](mailto:support@twisoftware.com) to have your access upgraded:

## 4 Downloading the Latest Software

- Click on the download link of the required software from the list.
- The system then displays options to **Run** or **Save** the installation program. **Save** is a quicker option if you will be installing the system on several computers as you will only need to download the file once. You will be prompted to enter a location to save the installation program to. **Don't forget the location**. It is advised you do **not** save to desktop as the installation file icon could be confused with the actual program icon after installation. Once the file has downloaded, select to **Run** it, or navigate to where the file was saved and double-click on the file name or icon.
- On selecting **Run** your pc may display a security warning. Select **Yes**, **Run** and/or **Allow** to proceed.

## 5 Installing the Software

- Click **Next** on the first screen and **Yes** to agree to the Licence Agreement.
- Next is Destination Location. You can accept the default folder or choose your own folder location to save the program to. If in doubt, choose the default folder. Don't forget the location. If in doubt, choose the default folder. Click **Next**, and **Next** again.
- **(For NDTSpec installation this screen does not appear)** Now select the default code/standard – this will be the first one displayed when using the software. Note that the other codes/standards will also be available. Click on **Next**.
- Select the default unit scheme and click **Next**.
- Select your preferred language, click **Next** and **Next** again. Once the installation has finished click on **Finish**.

If running Windows Vista or 7 you may see the message **Windows can't install the Amyuni Document Converter**. This means that if you want to export to pdf you will need to install a pdf writer (there are several free ones on the internet), set the pdf writer to be the default printer, and print your documents to pdf.

All of the defaults can be changed at any time by selecting **Tools, Options, Default settings** in your welding software.

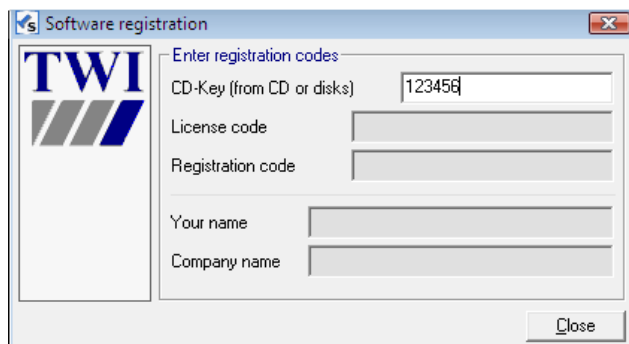
## 6 Registering the Software

If running Windows Vista or 7, Weldspec must be run as an administrator. You can force the software to always run as administrator by right-clicking on the software icon, clicking on **Properties, Compatibility** and place a tick in **Run this program as an administrator**.

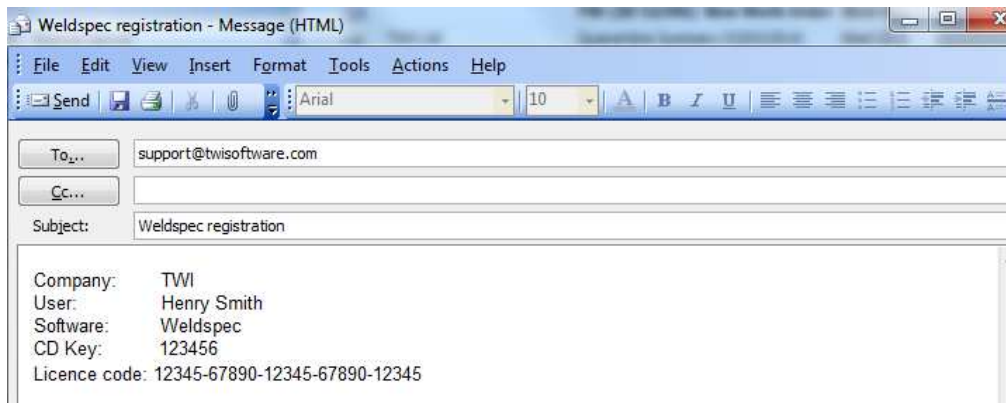
There will now be a program icon on your desktop and a program group **TWI Software** in the **Start** menu. When you open the program from one of these locations it will open in demonstration mode. This restricts the number of documents that can be created and displays demonstration text across the screen and any printouts.

Once the software has been paid for, to activate full working mode, the software should be registered as follows:

- Click on the **Close** button on the Welcome screen.
- Click on **Help, Register Software...**
- You should have been sent an email with the **CD Key** when you purchased the software. Type the **CD key** into the box provided, then press the **Enter** key on your keyboard. If you have purchased the software and you do not have a CD key, contact [support@twisoftware.com](mailto:support@twisoftware.com).



- The software generates a **Licence code** which should be emailed to [support@twisoftware.com](mailto:support@twisoftware.com) with the **name** of the user, the **CD key** used, the **company name** and the **name of the program** to be registered. The easiest way to do this is to copy and paste the codes into an email:



- We will email you a **Registration code**. Copy and Paste this into the box provided and press the **Enter** key. The software confirms it has been changed to full operation. If you have any problems activating the software, check that the codes you emailed to and received from TWI support match the codes you are using.
- Enter the User name and Company name into the boxes provided, click **Close**, then select **File, Exit**. When you reopen the software it will be in full working mode.

## 7 Setting up for Sharing Your Data on a Network

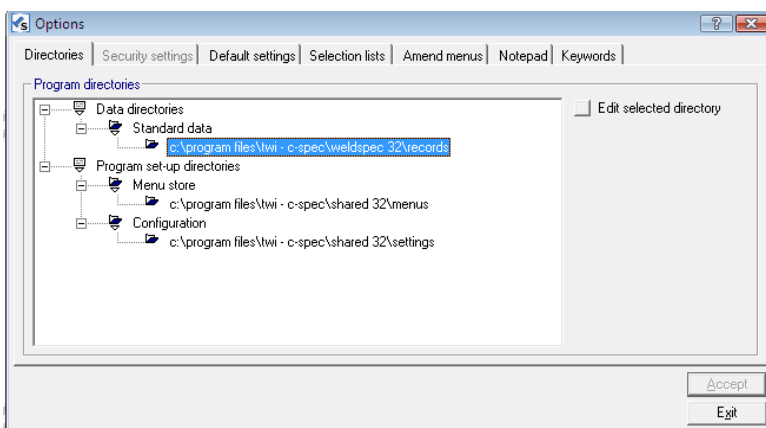
- To use the same program with the same menus and settings on different pcs over a local area network, you should initially complete the installation steps as above.
- Now move the folders containing the data you wish to share to a shared network drive or server directory to which all users have full read and write access from their PCs. The folders to be shared are in the following locations (assuming the default folder locations were chosen during install):

**Standard data:** c:\program files\TWI-C-spec\XXX 32\Records (where XXX is Weldqual, NDTspec, weldcoor (Welding coordinator), or Weldspec).

**Menu Store:** c:\program files\TWI-C-spec\Shared 32\Menus

**Configuration:** c:\program files\TWI-C-spec\Shared 32\Settings

- Enter the software (once you have registered it) and click on **Tools, Options**. On the directories tab you can click on the **Standard data** file path eg c:\program files\TWI-C-spec\weldspec 32\records and click on the **Edit selected directory** button. Now select the path to the folders you have copied onto your shared directory. Complete this for the Menu store and configuration files in the same way.



- Click **Accept**, before clicking **Exit** or another Options tab, otherwise your changes will be lost.

## 8 Setting up the Software

There are a number of features in the software which can be set-up. These are all described in the software's Help system or the Tutorial system (both found within **Help, Contents**). They include:

- Setting up users and passwords so that the software can automatically keep track of who has created, modified and signed documents.
- Setting up the header of the document including your company name and logo.
- Setting up document signature blocks.

If you have any problems with any of the above, see the program's **Help** system or contact software support on [support@twisoftware.com](mailto:support@twisoftware.com) or +44 (0)1223 899000.