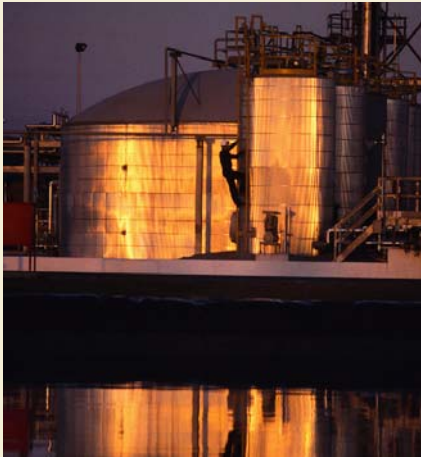


Advanced RBI software for optimising inspection and maintenance of storage tanks



- unit-wide risk audit enables repair and maintenance resources to be risk-focused
- safe inspection intervals are formally obtained based on an implicit time dimension of risk
- risk mitigation measures are signalled and selected to meet inspection frequency targets
- highly user friendly decision support tool in accordance with the new API RP 580
- user-selectable application display language

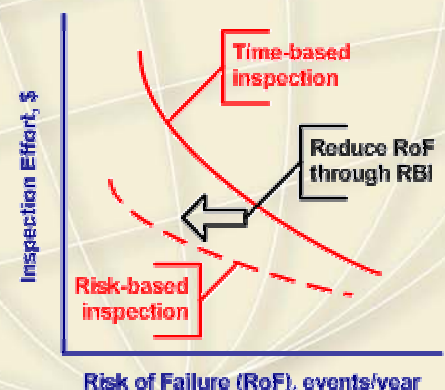
Industry is recognising that benefits may be gained from adopting formal risk-based maintenance (RBM) approaches to integrity management of above-ground storage tanks through improved targeting and scheduling of inspection and maintenance effort.

RISKWISE for Tanks™

- stores tank information in the Item Properties and Materials screens. This information can be easily integrated with asset information in other applications, via the in-built RISKWISE™ 'Import Wizard'
- captures all relevant historical inspection and maintenance history in the Inspection Methods screen for subsequent use in the identification of tank damage mechanisms prior to the risk assessment
- captures the location of all active and potentially active damage mechanisms within each storage tank
- assesses seven likelihood (probability) of failure factors and nine consequence of failure factors, for each tank
- presents the results of the risk analysis for each of the damage mechanisms, over the three forward time intervals, as well as the resulting remaining life indicator (RLI) which defines a safe inspection interval
- presents RBI assessors with a risk action plan from which the most suitable risk mitigation options, for critical tanks, can be evaluated

Benefits in brief

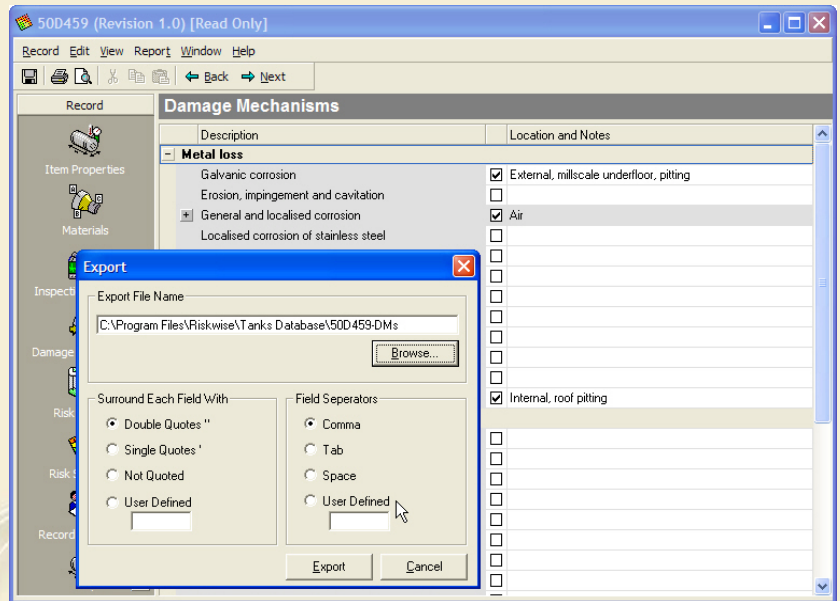
- improved safety
- optimum maintenance spend
- facilitates increased inspection intervals
- incorporates results of acoustic emission tests
- English, Chinese, Japanese and Spanish language versions available



RISKWISE™ is a TWI software product

Key features

- user friendly software, fully transparent – ensures buy-in by users
- audit team approach – accommodates plant experience
- interfaces with computerised existing inspection management systems
- time-based risk auditing module – equipment ranked by risk and remaining life
- maintenance frequency based on formal reliability rules – remaining life indicator (RLI) module
- focus/defocus module – facilitates selection of optimum mitigation measures
- fully auditable output – acceptability to insurers/regulators



Damage mechanism assessment window for Tanks

Implementation approach

RISKWISE for Tanks™ can be applied to all types of atmospheric storage tanks. The following approach is normally adopted:

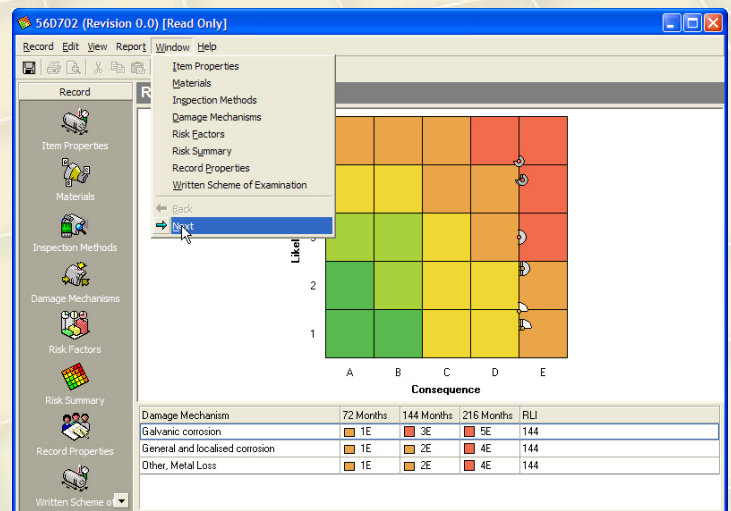
1. supply the software
2. conduct training in implementation and functionality of the software
3. assist in the implementation at a specified plant - optional
4. software maintenance and upgrade support – optional

Equipment requirement

- PC (stand-alone or networked) with MS-Windows operating system (NT 4.0, or higher)

Contact

Please contact riskwise@twi.co.uk or visit our website for up-to-date information on TWI's complete suite of RISKWISE™ products.



Risk summary and remaining life indicator for a tank

TWI Software

Granta Park, Great Abington,
Cambridge CB1 6AL, UK

Tel: + 44 (0) 1223 891162 Fax: + 44 (0) 1223 892588

E-mail: riskwise@twi.co.uk

Website: www.twisoftware.com/riskwise

